

**EAST LONGMEADOW, MA – 295 MAPLE STREET
DEVELOPMENT OPPORTUNITY – RESIDENTIAL LAND**



**Land Area: 4.47 Acres
Zoning: Residence B District**

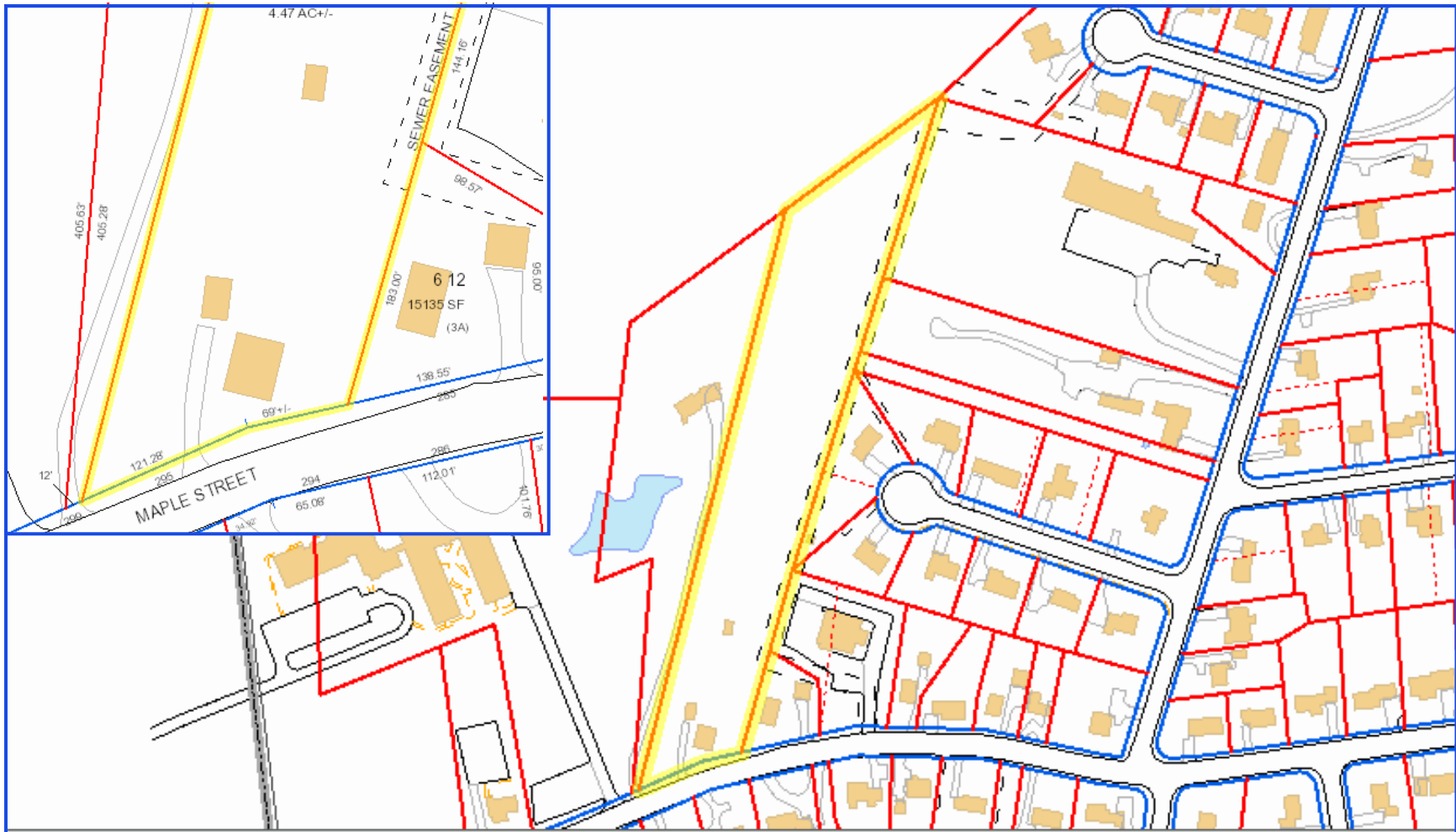
**Street Frontage: 190 feet
Parcel Depth: 1,162 feet**

**Current Improvements:
6-room, 3-bedroom, 1,287 sq. ft.
single family home, built in 1925**



Contact:
John Benoit, 413.567.2900, john@VantagePointRetail.com
666 Bliss Road, Suite 1, Longmeadow MA 01106

**EAST LONGMEADOW, MA – 295 MAPLE STREET
DEVELOPMENT OPPORTUNITY – RESIDENTIAL LAND**



Contact:
John Benoit, 413.567.2900, john@VantagePointRetail.com

666 Bliss Road, Suite 1, Longmeadow MA 01106