

**PALMER MA: 3,395 SF Former Bank Building Available for Lease**  
**1010 Park Street (Route 32), Palmer MA 01069**



Land Size: 0.793 Acres  
 Building Size: 3,395 SF  
 with Drive-Thru  
 24 Dedicated Parking Spaces



**John Benoit**  
 413.567.2900  
 John@VantagePointRetail.com



**Martin Benoit**  
 617.877.5257  
 Martin@VantagePointRetail.com

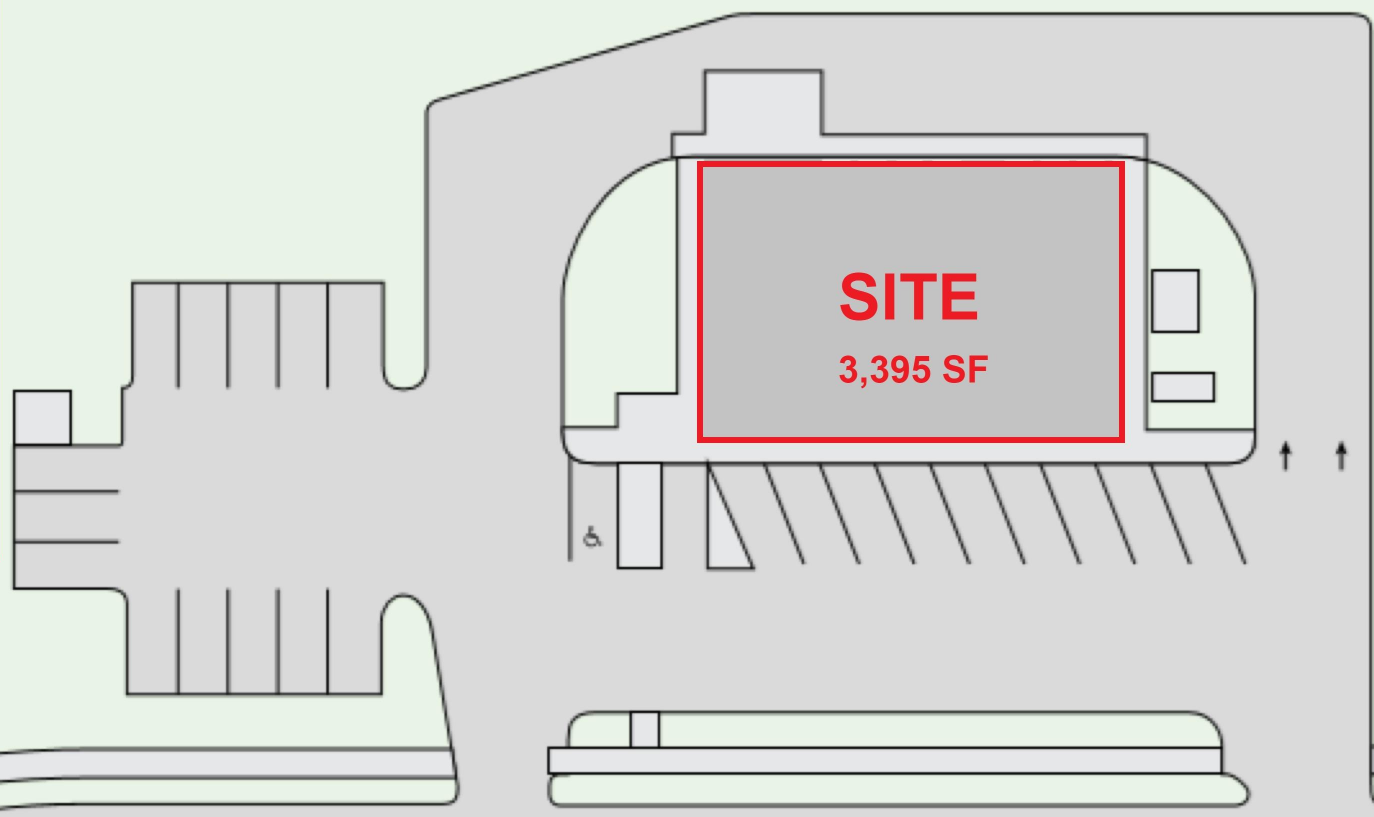
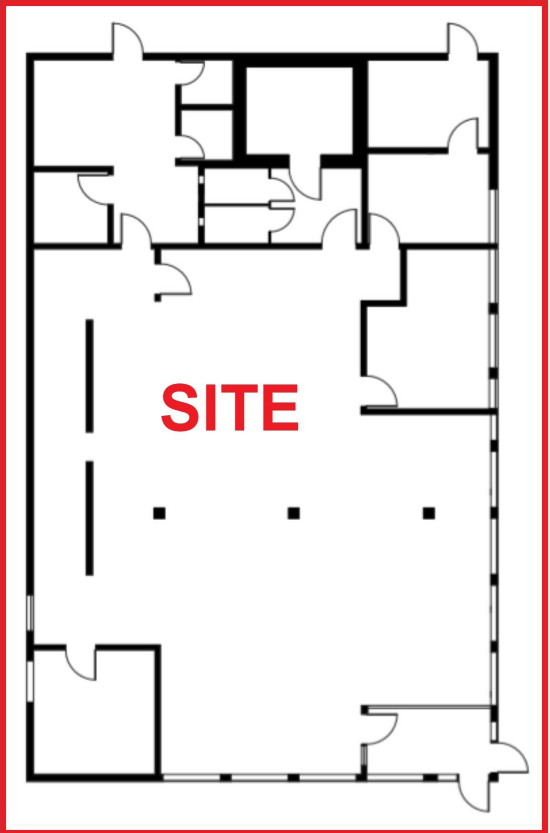
VANTAGE POINT RETAIL LLC  
 734 BLISS ROAD, SUITE 1, LONGMEADOW MA 01106

*Information concerning the property described herein has been obtained from sources deemed to be reliable, but we make no representations or warranties, express or implied, as to the accuracy or completeness of such information. Opinions, assumptions, or estimates contained herein are projections only and may be based on assumptions or criteria different from that used by other investors. Investors should conduct their own independent investigation and rely on those results. The information contained herein is subject to change.*









THORNDIKE STREET



PARK STREET



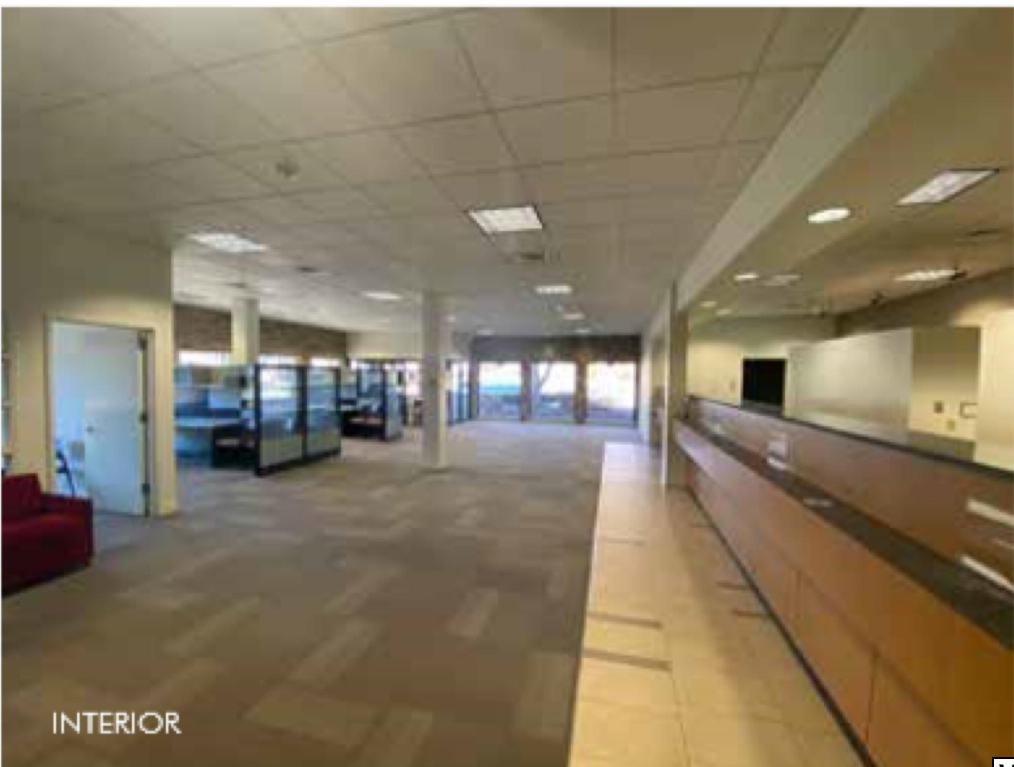
1010 Park Street, Palmer MA - Site Details



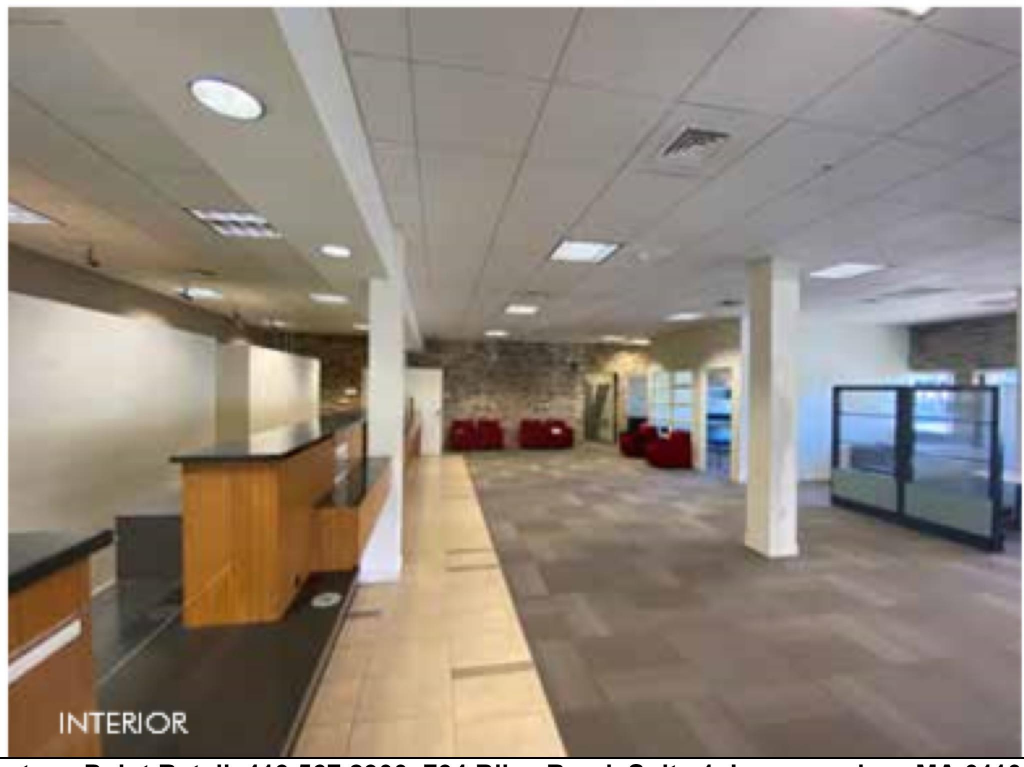
DRIVE-UP



PARKING



INTERIOR



INTERIOR